

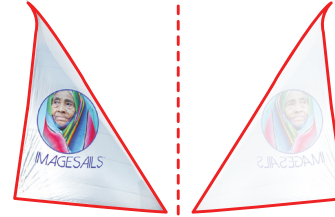
# 50% Coverage



50% Coverage Continuous  
High-resolution Impression  
(One-Sided)

## Option 3a

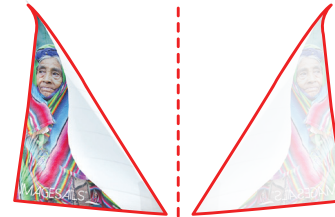
50% Coverage One-Sided  
50% coverage on one side, second  
side is approx. 20% show-through.



front side back side

## Option 3b

50% Coverage One-Sided  
50% coverage on one side,  
second side is approx. 20%  
show-through.



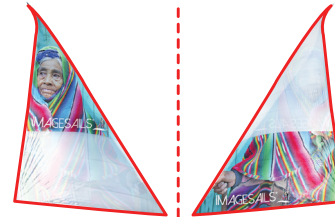
front side back side



50% Coverage Continuous  
High-resolution Impression  
(Two-Sided)

## Option 4a

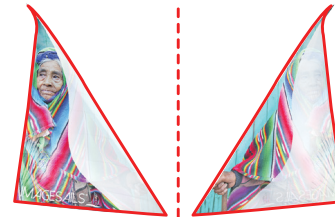
50% Coverage Two-Sided  
50% coverage on one side,  
second side is staggered.



front side back side  
Staggered imagery eliminates image  
competition from translucence (about 20%  
show-through).

## Option 4b

50% Coverage Two-Sided  
50% coverage on one side,  
second side is staggered.



front side back side  
Staggered imagery eliminates image  
competition from translucence (about 20%  
show-through).